



HOW DO WE WANT OUR CITIES TO BE?

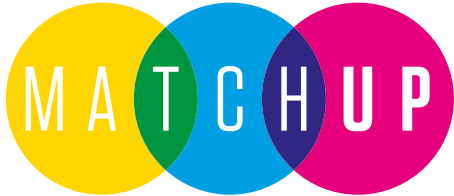
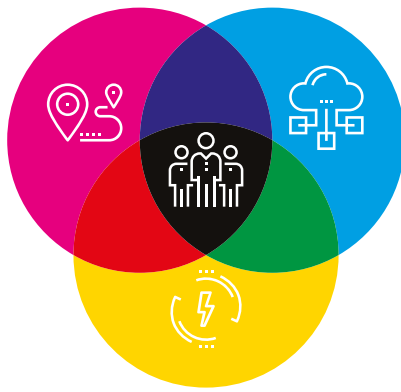
MATchUP is a EU-funded Smart City project aiming to create and adopt solutions that can turn urban problems into smart opportunities to improve the citizens' quality of life and boost the local economies.

The final aim is to create a prosperous and more liveable urban environment for communities through dedicated actions to improve the energy efficiency, increase the sustainable mobility and invest on technology that will serve as a model of urban transformation for other cities in Europe and beyond.

MATchUP will be demonstrated in three lighthouse cities and four follower cities that will join forces to reshape their social, economic and environmental models and to promote social inclusion, liveability and prosperity for their citizens.

A CITIZEN-CENTRIC APPROACH

To become a smart city means to provide the right services, tools and technologies tailored on citizens and on their urban environment. By implementing technology-driven solutions together with non-technical actions in a smart and innovative way, cities can become more attractive for citizens and businesses. A citizen-centric approach is crucial for the success of a smart city. MATchUP activities will be highly tailored on citizens who will play an active role in the co-creation of new urban strategies.



PROJECT COORDINATOR
Ayuntamiento de València
coordinator@matchup-project.eu

COMMUNICATION SECRETARIAT
Fondazione iCons
info@matchup-project.eu

STAY IN TOUCH:  www.matchup-project.eu  [@matchupEU](https://twitter.com/matchupEU)









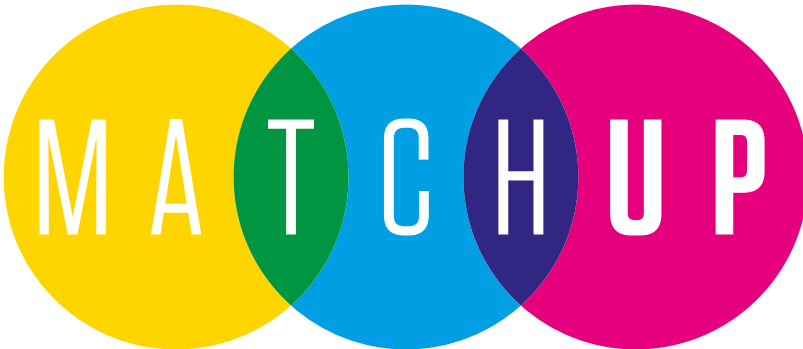






This project has received funding from the European Union's Horizon 2020 research and innovation programme under grant agreement No. 774477.





AN INNOVATIVE PALETTE
OF SOLUTIONS FOR YOUR CITY

3 LIGHTHOUSE CITIES take the lead of the project by implementing innovative and technological solutions to boost their local economies and improve the quality of life of their citizens.



DRESDEN
(Germany)

4 FOLLOWER CITIES have the key role to replicate the solutions that have proven to deliver results in the Lighthouse and maximise their potential.



OSTEND
(Belgium)



HERZLIYA
(Israel)



SKOPJE
(FYROM)



KERAVA
(Finland)



VALENCIA
(Spain)



ANTALYA
(Turkey)



ENERGY

LESS ENERGY, MORE SOLUTIONS

MAThUP aims to achieve high-performance districts through a series of interventions:

- improvements in buildings' energy efficiency,
- high integration of renewables in the energy supply,
- implementation of advanced energy management systems combined with innovative storage systems.

Moreover, an advanced management of the urban energy infrastructures will be set up, integrating innovative storage technologies to increase the global performance and RES contribution. Several innovative management systems will be deployed, from smart meters to overall recharging management solutions to reduce the grid impact.

+45%
ENERGY EFFICIENCY IMPROVEMENT



MOBILITY

SMART SOLUTIONS, BETTER MOBILITY

New electromobility solutions, both for persons and goods, will be implemented in MAThUP through new electric vehicles (EV) and charging infrastructures.

The most relevant actions that MAThUP will implement in this area are:

- conventional vehicles replacement: more than 150 EV will be introduced,
- implementation of around 120 innovative charging infrastructures for e-vehicles and e-buses,
- improved logistic solutions, like last mile logistics based on e-Bikes, and
- multimodality strategies.

+4,000
TONS OF CO₂ SAVED PER YEAR



ICT

CONNECTED CITIES, LIVEABLE LIVES

MatchUP will develop ICT solutions for improved planning management, control and maintenance of physical urban infrastructures and operational technologies in buildings, energy and transport, to enable better services for individuals and businesses.

An Open Specifications ICT concept will be established, defining a common approach in all functional requirements, software architecture and data structures to be designed and implemented.

Following this open specification concept, the current existing ICT models present in the cities will be improved with ICT solutions fully integrating at urban level to complement the demonstration.

SMART
INTEGRATION OF CITY SERVICES



CITIZENS

SMART CITIES, CITIZENS' CITIES

MAThUP wants to redesign cities by complementing the technical solutions with a set of non-technical ones, such as specific social engagement activities, sustainable employment initiatives, staff exchange, city mentoring, and validation of innovative business models.

Different key actors – policy makers, universities, industry, investors and, most importantly, citizens – will join forces to develop smart models of innovation, inclusion and prosperity to restore cities' liveability.

MAThUP aims to strengthen the city transformation strategies in a sustainable and inclusive manner, empowering citizens to participate in the planning process and integrating their voice in the replication and scale up plans.

90,000
CITIZENS INVOLVED IN 3 DISTRICTS